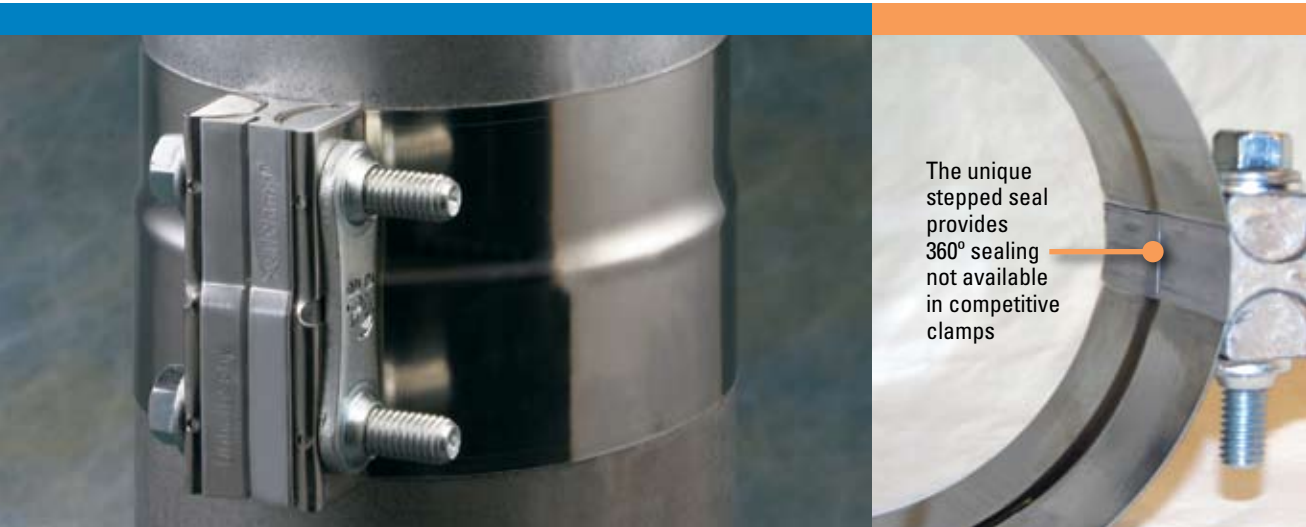




Stepped SealClamp™ Exhaust Clamp

Fewer Parts, Lighter Weight and Easier to Install



The unique stepped seal provides 360° sealing not available in competitive clamps



Only one loose part - eases assembly and disassembly

Easier to install!

- Pre-assembled with fewer parts
- Requires less torque than other designs
- One wrench installation
- Reversible threaded nut bar

Visual torque indicator

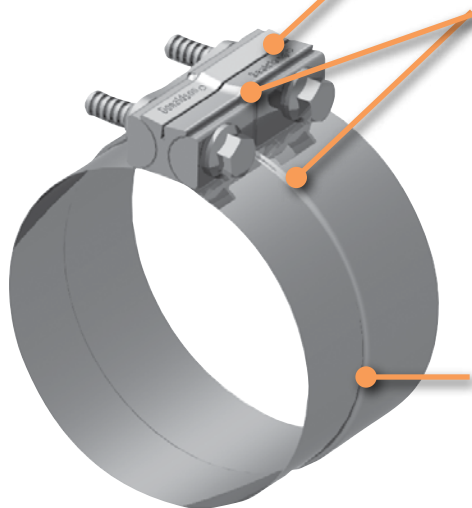
- Lower torque makes for easier and quicker installation
- Groove provides a visual guide to proper torque

360° stepped shape improves joint seal

- Reduces exhaust leaks by more than 65% compared to other non-gasketed clamp designs
- Resistance to joint separation is nearly twice that of other brands
- Conforms tightly to overlapping connections – ideal for most overlapping I.D. to O.D. joints
- Reduced flex pipe pinching
- Reduces exhaust noise

Quality materials

- .14-.20 lbs. lighter than other brands
- Improved rust resistance
- Available in stainless or aluminized steel with aluminum and zinc-plated components
- High strength, grade 8 fasteners



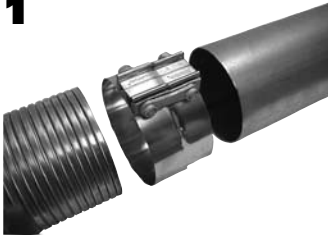
U.S. Patent Nos. 6,116,659; 6,634,607 B2; and 6,796,004 B2

Bolts fit both 9/16" and 14mm wrenches

Donaldson®

Three Simple Installation Steps

1



1. Position the SealClamp over the smallest tube. Larger end of the clamp must be on the overlapping tube or flex.

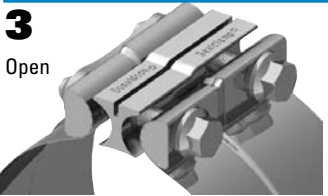
2



2. Locate the step of the clamp to the overlapping tube at the joint.

3

Open



3. Using the groove as a visual guide, **alternately** tighten bolts until the groove is approximately half closed (~50 ft. lbs).

Closed



Note: Do not exceed 70 ft. lbs. torque as clamp damage may occur.

Order Information

O.D. Pipe inches	mm	Part No.	
		Aluminized	Stainless
2.50	64	X007832	X007829
3.00	76	X007833	X007830
3.50	89	X007834	X007831
4.00	102	X007824	X007784
5.00	127	X007805	X007785
6.00	152	n/a	X009076



Donaldson

Donaldson Company, Inc.
Minneapolis, MN
55440-1299

www.donaldson.com

Brochure No. F111098 (01/06)

© 2006 Printed in the U.S.A.
Equal Opportunity Employer
Donaldson Company, Inc. reserves the
right to change or discontinue any model or
specification at any time and without notice.

North & South America
800-374-1374

Europe & Middle East
32-16-38-3811

Asia Pacific
65-6311-7373

South Africa
27-11-389-8800

Australia
612-4350-2033